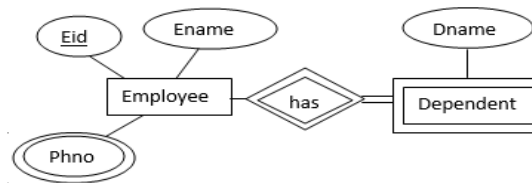


1st DATA BASE ENGINEERING ASSIGNMENTS FOR 4th Semester FOR CSE and DATA BASE MINOR STUDENTS -2019

- Q1. Write the advantages of DBMS over file system?
 Q2. What is Data independence and abstraction?
 Q3. Explain about 3 level architecture of DBMS.
 Q4. What do you mean by Specialization, Generalization and Aggregation in Extended ER Model?
 Q5. What is WEAK Entity and Identifying Relation, Explain with a suitable example?
 Q6. What do you mean by participation constraint and cardinality ratio of a relationship?
 Q7. Differentiate relation schema and instance?
 Q8. What do you mean by NULL values in a relation, explain with suitable example?
 Q9. Explain DDL, DML and DCL?
 Q10. Find the Degree of the relationships, Participation constraint and Cardinality ratio?



- Q11. What are different types of constraints can be applied on a relation schema? Explain.
 Q12. Discuss about Entity integrity constraint and Referential integrity constraints.
 Q13. How super key, candidate key and primary key are different from each other, explain with example?
 Q14. Discuss about various types of attributes in ER model?
 Q15. Explain about all kind of relationship in ER model?
 Q16. Assume the following relation schema R.
 $R(K_1, K_2, K_3, \dots, K_n)$ with each attributes has their corresponding domain $(d_1, d_2, d_3, \dots, d_n)$ respectively. How many maximum number of tuples can be formed for the relation R?

N: B- All the questions in 1st internal examination will be from this assignment only. However, the order and no. of questions in internal exam may vary.

Rashmi Ranjan Sahoo
 Assistant Professor,
 Department of CSE,
 PMEC, Berhampur
 Email: rashmikiranjan.cse@pmec.ac.in